

Celotex Insulation Clip

Introduction

The Celotex Insulation Clip has been designed to enable insulation boards to be installed between timber joists or rafters quickly and without the need for nails, screws or battens. They provide a permanent way of securing the Celotex insulation with as little fuss as possible.

The clip should be used in situations where the insulation is being installed from above or below, for example, when fitting between joists in a **suspended timber floor**.

Using the clip ensures that the insulation will be held firmly in place once installed in the correct manner.

Installation Guidelines

- Celotex insulation boards should not be installed when the temperature is at or below 4°C and falling.
- The joists / rafters should be installed in the conventional manner in accordance with the Building Regulations.
- Cut the Celotex insulation boards to the width of the space between the joists or rafters, ensuring a straight edge to the board to enable a tight interference fit.
- Push the insulation clips into the board at 1000mm intervals with the two prongs piercing the exposed foam down the long edge of the board (see Fig.1)
- Start the clips in between the joists / rafters and push the board into place (see Fig.2). This should be a tight fit to minimise heat loss through the gaps between the joists / rafters and insulation board.
- Push the board fully home so that the base of the insulation clip is level with the face of the joists / rafters (see Fig. 3)
- If additional board security is required, for example where there is no lining between the joists or rafters, nail through the base of the clip directly into the joist (see Fig.4)
- Where additional insulation or plasterboard is required below the joists, continue as in the Celotex literature for that application (see Fig.5).

Further Information

If you wish to contact Celotex , please visit celotex.co.uk and click on the 'contact us' page.

For information regarding **storage, installation and handling** of Celotex products, or for **Health and Safety** advice, please refer to the 'literature' pages of the website at celotex.co.uk

Celotex has a policy of continuous product development and reserves the right to alter product designs or specifications without prior notice.

*Calls to the Celotex Technical Centre are charged at 30p per minute from a BT landline and lines are open Monday - Friday from 8.00am - 5.15pm. Details and pricing are correct at date of publication - January 2011



Fig. 1

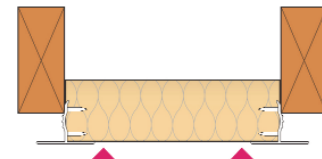


Fig. 2



Fig. 3

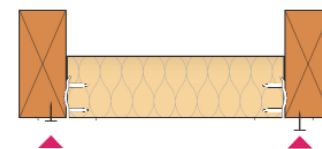


Fig. 4

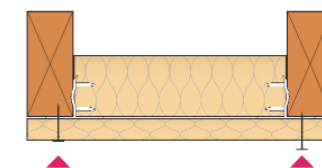


Fig. 5

Celotex Limited
Lady Lane Industrial Estate,
Hadleigh, Ipswich
Suffolk IP7 6BA

T: 0901 996 0100*

W: celotex.co.uk

Registered Office:
Lady Lane Industrial Estate
Hadleigh, Ipswich, Suffolk IP7 6BA

Registered in England No 2183896